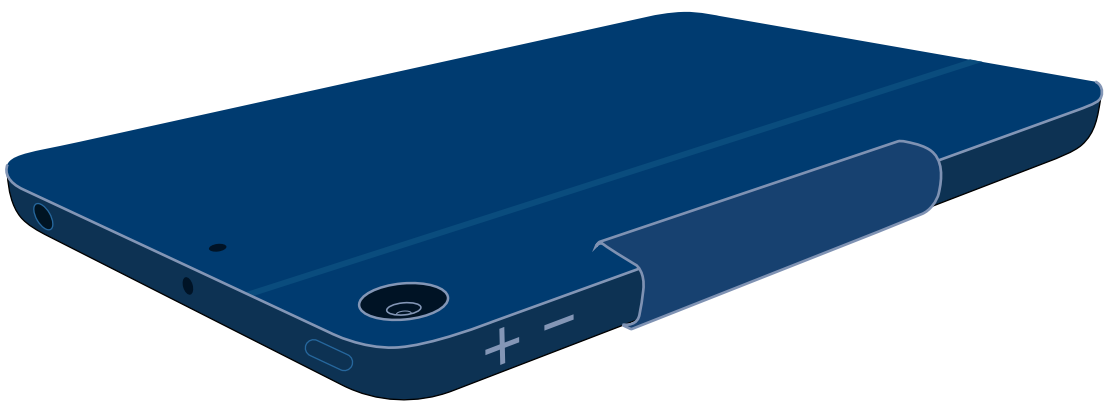


# 5

## THINGS TO REMEMBER

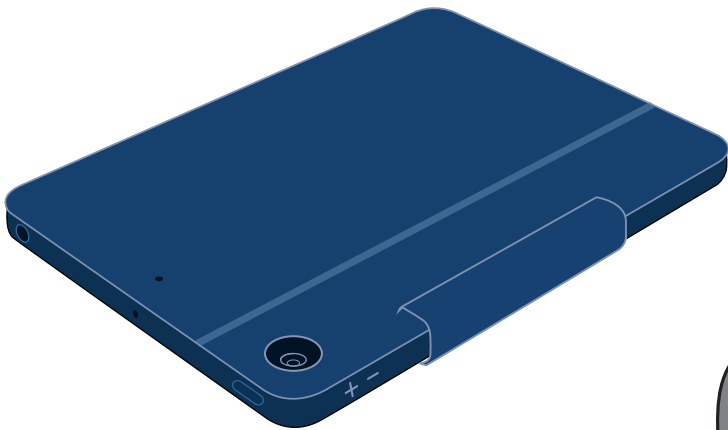
when using your iPad



logitech®

# CLOSE

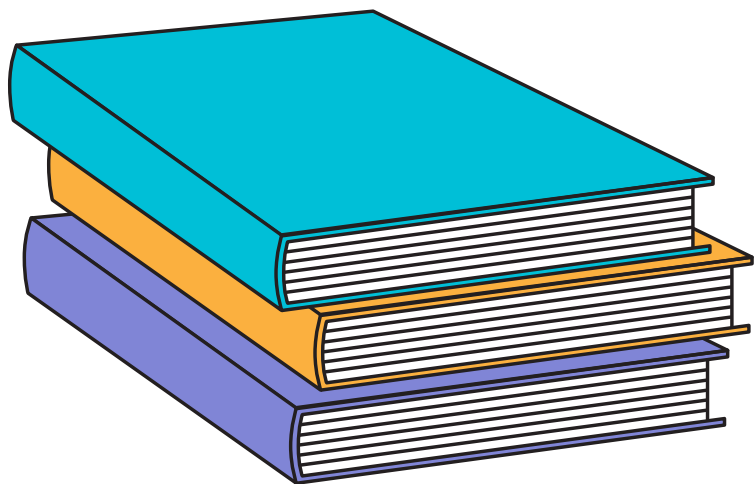
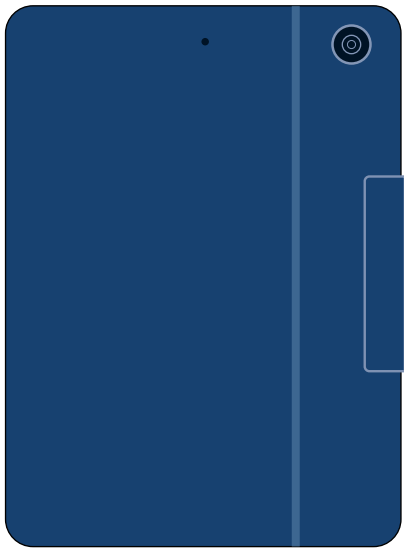
case before you put  
it in your backpack.



logitech®

# HOLD

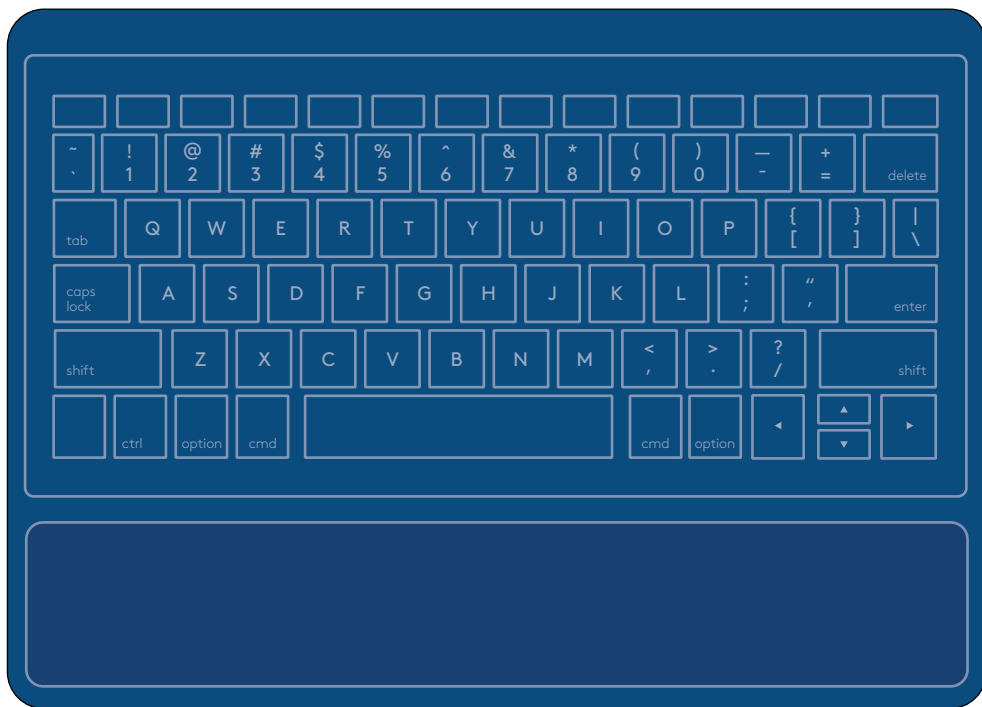
iPad separately  
when carrying books  
and binders.



logitech®

# PROTECT

and take care of  
the item at school.



**Intentional damage  
can break the  
keyboard or iPad.**

logitech®

# KEEP

iPad and case  
together.

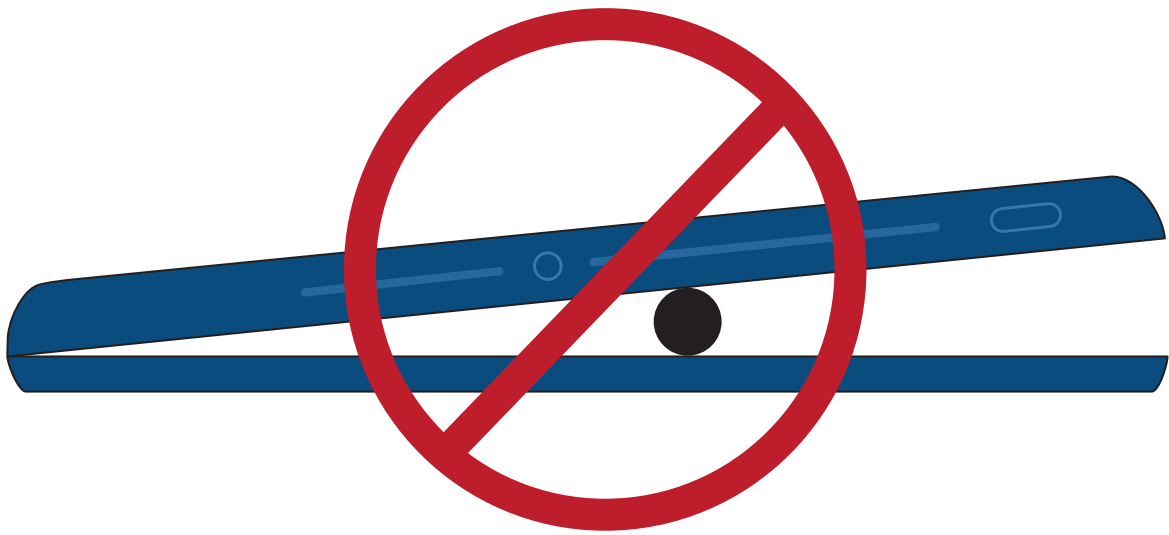


**iPad should not be  
removed from the case.**

logitech®

# KEEP

the space between  
keyboard and iPad  
clear of objects.



No items should be  
placed between the  
keyboard and iPad.

logitech®